

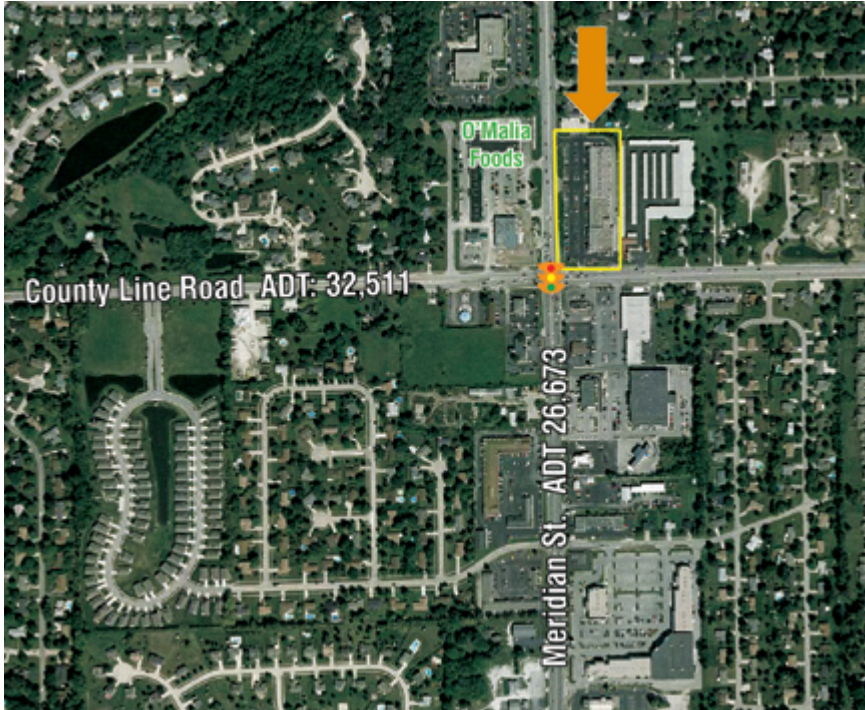


## Meridian Marketplace

Located in one of Indianapolis and Greenwood's most densely populated trade areas.

### Features

- Located at the trade area's highest traffic intersections, South Meridian Street and County Line Road, which is controlled by a traffic signal.
- Great visibility from both County Line Road and South Meridian Street
- Well established neighborhood center anchored by Walgreens with a great tenant mix
- Center's unique location makes it able to draw from both the Greenwood – west and Indianapolis – south populations.



### 2010 Demographics (estimated)

	1 Mile	3 Miles	5 Miles
Population	9,049	74,889	150,347
Households	3,433	29,993	60,281
Growth	1.8%	1.7%	2.5%
Average HH Income	\$70,043	\$66,128	\$67,993
Median HH Income	\$73,947	\$66,237	\$67,039

#### For more information

Jake Teter

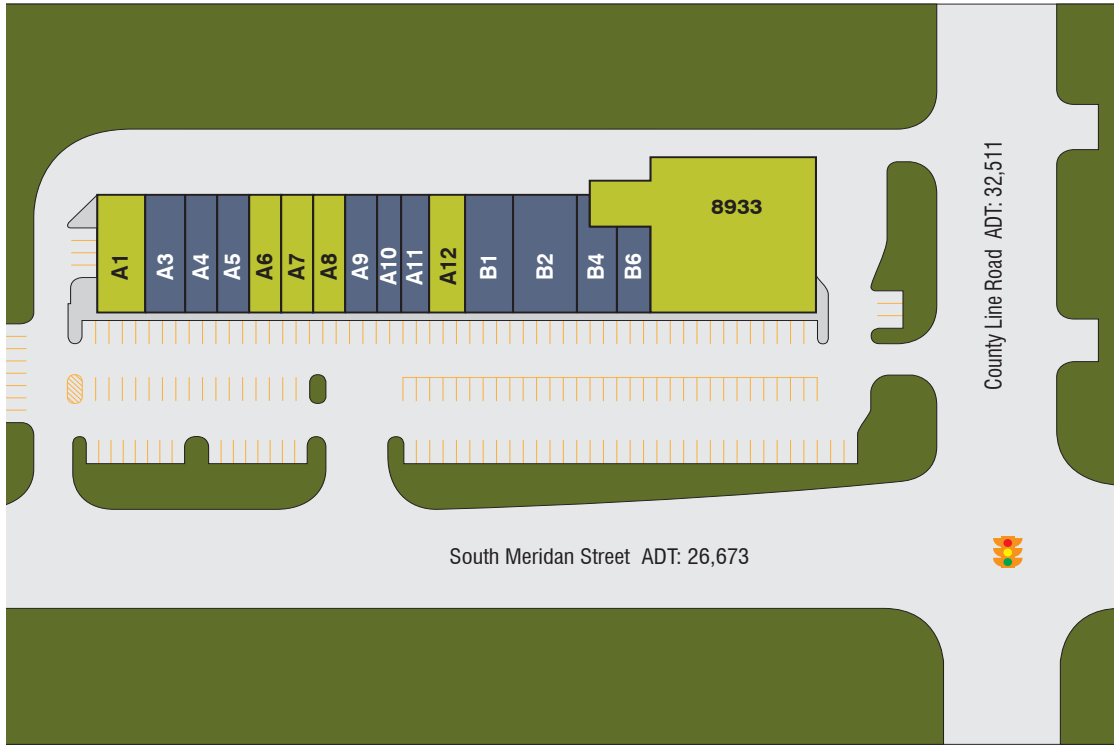
[jteter@centreproperties.net](mailto:jteter@centreproperties.net)

317.816.4646 ext 16

**CENTRE**  
PROPERTIES

**Meridian Marketplace**

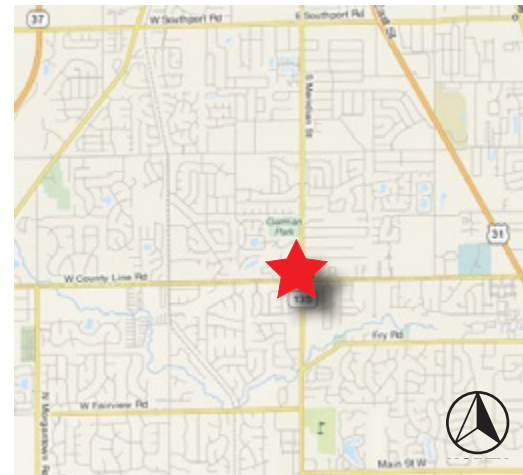
8923 South Meridian Street, Indianapolis, Indiana



**Availability**

Unit	Tenant	Dims.	Sq. Ft.
A-1	Available	30' x 80'	2,400
A-3	Radio Shack	25' x 80'	2,000
A-4	Southside Tobacco	20' x 80'	1,600
A-5	W.P. Chinese Carryout	20' x 80'	1,600
A-6	Available	20' x 80'	1,600
A-7	Available	20' x 80'	1,600
A-8	Available	20' x 80'	1,600
A-9	Comic Book University	20' x 80'	1,600
A-10	Great Clips	15' x 80'	1,200
A-11	Queen Nails	17.5' x 80'	1,400
A-12	Available	22.5' x 80'	1,800
B-1	Marketplace Dental Care	30' x 80'	2,400
B-2	Play It Again Sports	40' x 80'	3,200
B-4	Chez Jean Bakery	Irregular	2,000
B-6	Blimpie	23' x 60'	1,400
8933	Available	Irregular	13,940
Total Square Feet			41,340

111111



**For more information**

Jake Teter  
 jteter@centreproperties.net  
 317.816.4646 ext 16

**CENTRE**  
 PROPERTIES

**Meridian Marketplace**

8923 South Meridian Street, Indianapolis, Indiana

The information contained herein was obtained from sources we consider reliable. However, we cannot be responsible for errors, omissions, prior sales, withdrawal from the market or change in price. Seller and broker make no representation as to the environmental condition of the property and recommend purchaser's independent investigation.